

## UNIK APARTMENTS

유니크 아파트

Beckmann-N' thepe Architectes

베크만-응테프 아키텍츠



Situated at the end of Avenue Lefaucheux, the plot of land is located at the entrance to the joint development zone by the quay. Thanks to its position, it has exceptional views over the Seine, with the island of Billancourt opposite and the new urban park anchoring the riverbank.

The idea of the project is to open the garden, at the heart of the plot, outwards, so that it is linked to the new park within the development zone. This means that the majority of the apartments benefit from both the light and the views, and a link with the landscape is created.

In response to instructions received from Patrick Chavannes and Thierry Laverne, visual transparencies have been built in at the level of the building's common base. This offers an enhanced distribution of both light and sightlines, softening the transition between public and private spaces. In the same way, the way the building is set back from the street, along with the opening on the north side on rue Traversière, help to open up the plot : a small private square broadens the urban perception of the street.

The composition of the facades is directly influenced by the visual spectacle of the Billancourt park and the river : in the central part of the building, mosaic cladding reflects the context in its choice of colours, whilst the choice of modules of white concrete for balconies and walkways enhances the sense of continuity with the generous openings that punctuate the vertical volumes.

Similarly, lush and abundant vegetation is an inherent part of the design. The park continues not only through the central garden, but also up the facade and all the way up to the roof terraces. It gives a strong identity to the whole design, transforming these spaces into a background for plants and bushes. The overall image becomes blurred with the background. Residents have their 'heads in the treetops'.



Central garden



**Location** Boulogne-Billancourt, France  
**Function** Residential facility  
**Site area** 4,124m<sup>2</sup>  
**Bldg. area** 2,902m<sup>2</sup>  
**Total floor area** 15,618m<sup>2</sup>  
**Stories** B8, 13FL  
**Structure** Concrete  
**Finish** Enamelled glass, Fine coating, Prefabricated concrete, 3D aluminium panel  
**Design participation** Sibylle Pöhler, Wilfried Daufy, Camille Garzuel, Maxime Laurent, Warren Mouran, Amélie Renevier, Marianne Richardot, Marine Tenette  
**Photographer** Declared in picture

**위치** 프랑스 불로뉴비양쿠르  
**용도** 주거시설  
**대지면적** 4,124㎡  
**건축면적** 2,902㎡  
**연면적** 15,618㎡  
**규모** 지하8층, 지상13층  
**구조** 콘크리트  
**마감** 에나멜 유리, 미세코팅, 조립식 콘크리트, 3D 알루미늄 패널  
**사진** 개별표기



Site plan



© J. Callejas

facade of north



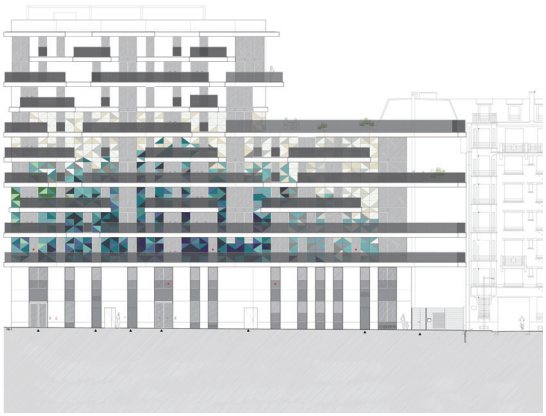
© Sto

facade of south



© J. Callejas

facade of south



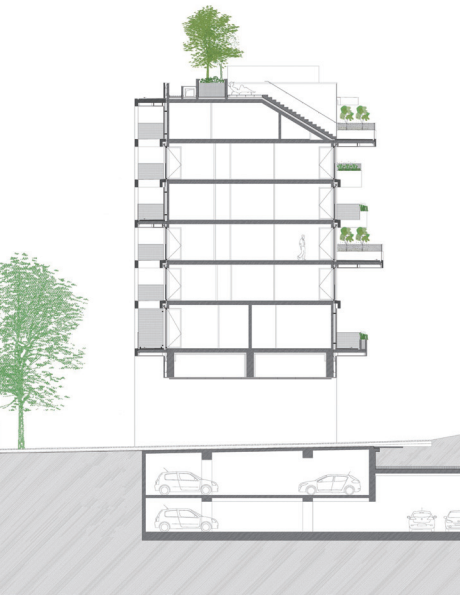
South elevation



East elevation



North elevation



Section



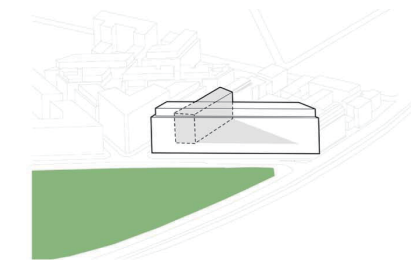


© C. Valtin

Facade of south

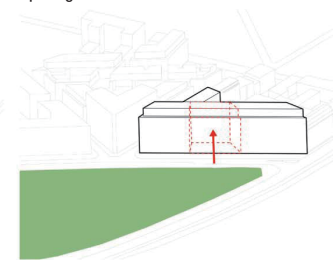
## Diagram

· First volumes



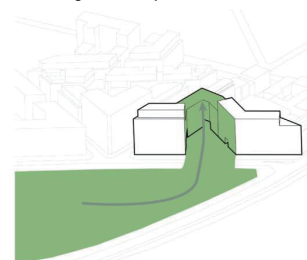
– 30% benefit vs 70% constraint

· Opening the centre of the lot



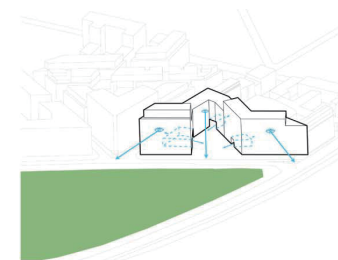
– 1 intelligent breach

· Extending the urban park



– 60% of vegetation

· Openings and transparencies



– 100% views over the park and the Seine river



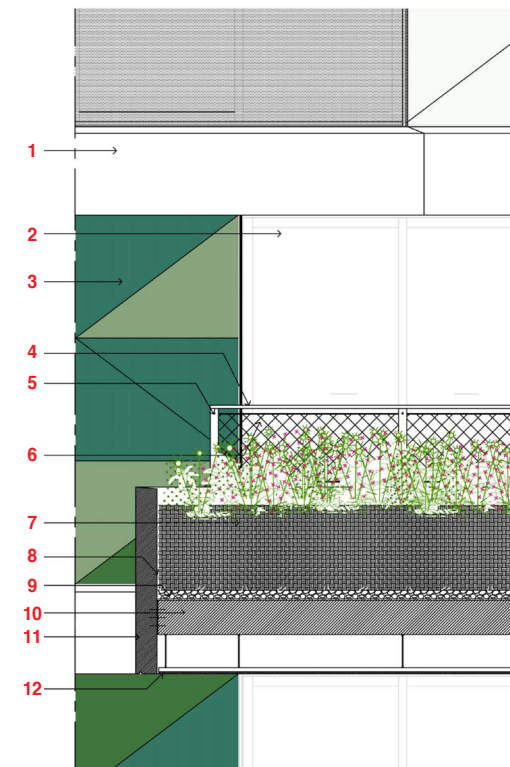
© J. Callejas

Facade detail

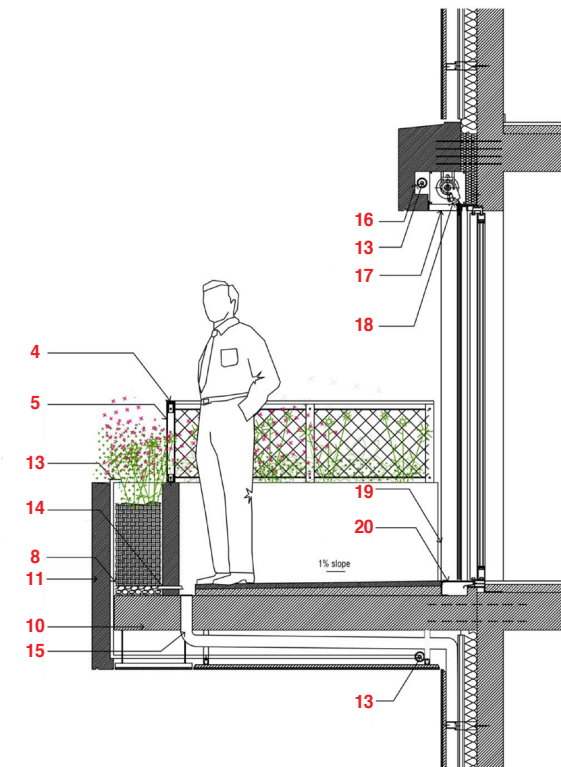


© O. Amsellem

View from passageway



Balcony detail



1. White prefabricated concrete balcony attached to concrete slab
2. Sliding aluminium joinery / Natural anodized finish
3. Enamelled coloured glass / StoVentec glass / External insulation system 6 units composition
4. Steel plate handrail(2cm thickness)
5. Vertical handrail support / Lacquered steel finish / Sealed to the concrete planted box
6. Jakob stainless steel net for growing plants 50mm mesh fixed to stainless steel cable
7. Compost(50cm depth)
8. Resin seal coat
9. Drainage layer(5cm thickness)
10. Concrete slab(21cm thickness)
11. White prefabricated concrete planted box attached to concrete slab
12. Waterproof false ceiling / Cement panel / White paint finish
13. Drop by drop water system 2cm diameter pipe
14. Planted box drainage transferred to rainwater overflow Compost (5cm depth)
15. Balcony overflow + planted box drainage transferred to rainwater pipes
16. Sheath(8cm diameter)
17. Covering of the roller shutter / Natural brushed aluminium finish
18. Roller shutter / Aluminium finish
19. Planted box stopped 2cm before facade
20. Metallic mesh gutter(16cm width)





© © Amsellem

View from central garden

#### 유니크 주택

프로젝트의 부지는 르포슈 가가 끝나는 부두 옆 공동 개발 구역의 어귀에 있다. 맞은 편에는 빌랑쿠르 섬이 있고 센 강이 내려다보이며 강둑에는 도시 공원이 계획되어 경관이 아름답다.

우리는 부지의 중심에 있는 정원을 외부로 개방하여 개발 지역 내 신축 공원과 연결하고자 했다. 이로써 대다수의 세대에 충분한 햇빛과 전망을 보장하고, 자연과의 연결 고리를 형성하였다.

파트릭 사반느와 티에리 라베른의 요구 사항에 따라 건물의 기반부에 투명성을 부여했다. 이에 빛과 시선을 분산시켜 공공 구역과 사적인 구역이 자연스럽게 연결되도록 했다. 같은 방식으로 트라베르시에 가에 있는 북쪽의 개구부와 더불어 건물을 가로 반

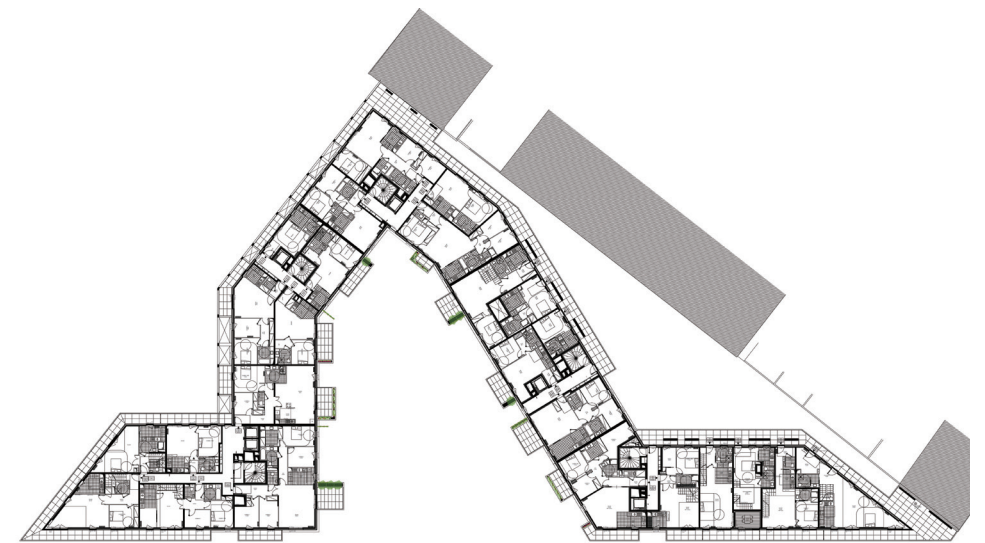
대 방향으로 후퇴시킴으로써 부지에 열린 느낌을 주었다. 또한 거주민에게만 개방되는 소규모 광장을 계획하여 거리에 대한 인식률을 높였다.

건물 중앙부의 모자이크 마감에 적용할 색상 또한 주변 환경의 맥락을 반영하여 선정하는 등, 빌랑쿠르 공원과 강의 풍경을 파사드의 설계에 반영하였다. 발코니 및 산책로는 백색 콘크리트 모듈로 계획하고 수직 볼륨에 널찍한 개구부를 내어 연속성을 강화했다.

설계에 필수적인 요소인 녹색 식물도 풍성하게 조성했다. 공원은 중앙 정원 뿐만 아니라 파사드와 옥상의 테라스까지 확장되어 설계 전체에 강한 정체성을 부여하고 식물과 관목의 배경 역할을 한다. 전체적인 이미지는 배경 속으로 녹아들어간다. 마치 주민들의 머리 높이에 우듬지가 펼쳐져 있는 것만 같다.



Eighth floor plan

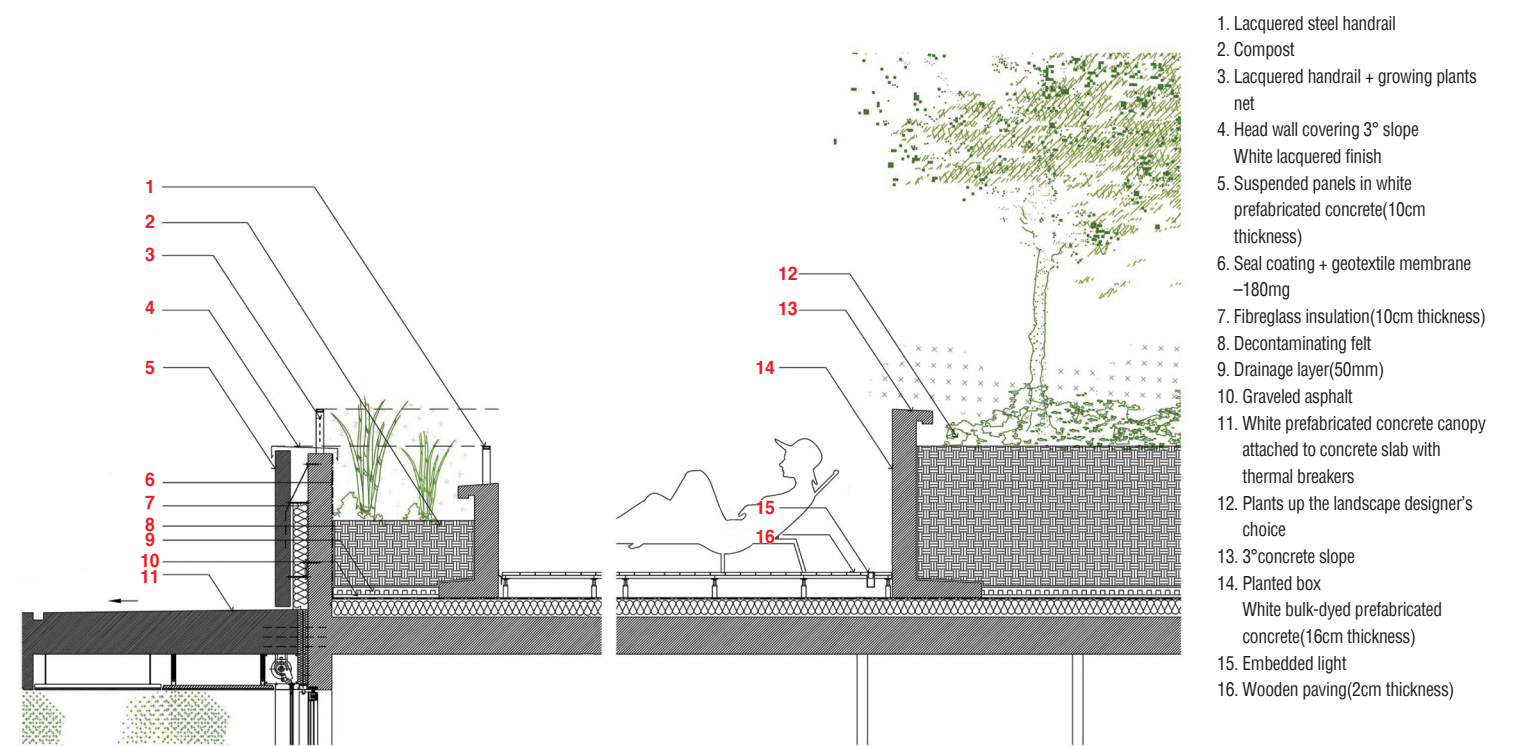


Third floor plan



First floor plan





Solarium section detail